

Test Report

Report No. SCL01I118709

Page 1 of 14

Report Issued Date : Jan. 5, 2017

The following sample(s) and sample information was/were submitted and identified by/on the behalf of the client

Sample Description	1000HNX Hardener
Amount of Sample	2 oz
Buyer's Name / Division	Adidas Apparel
Applicant & Address	INKCUPS NOW CORPS 310 ANDOVER STREET DANVERS MA 01923, USA
Contact Person	Joe S.
Tel No.	978-646-8980
Mail Box	joes@inkcups.com
Summary Report	Pass
Failure Test Items	---
Age Group	Adults/Infants/Children
Material Name/ Code	1000HNX Hardener
Color Name/ Code	---
Supplier Name	---
Country of Origin	---
Country of Destination	---
Material Component	---
Sample Classification	Miscellaneous&Others
Material key code under adidas-Group A-01 test standard (2016)	509&Cement
RSL based on	The adidas-Group A-01 RSL (2016)
Report Type	(FT)
Full Test Report No.	---
P.O. No.	---
Item No.	---
Additional Information	Size:S-XXL
Sample Received Date	Dec. 30, 2016
Testing Period	Dec. 30, 2016 to Jan. 5, 2017

Full Test (FT)/ First Order (FO)/ Separate Colors (SC*)/ New version update test items (NT*)/ Improvement Test (IT*)/ Random Test (RT)/ Supplier Internal (SI)/ Special Test (ST*)



Tested by Ruby Wei

Approved by Yanna Cao

Yanna Cao
Lab Manager

Centre Testing International Group Co.,Ltd.

Reviewed by Amy Li

Date Jan. 5, 2017

No. S198449155

Hongwei Industrial Zone, Bao'an 70 District, Shenzhen, Guangdong, China

Test Report

Report No. SCL01I118709

Page 2 of 14

Report Issued Date : Jan. 5, 2017

<u>Summary of Test Result(s)</u>			
Test Item(s)	Pre-Treatment	Test Method	Test Result/Conclusion
Cadmium-Extraction	DIN EN ISO 105-E04 (2013) in acid solution (1 hour extraction with 37°C)	DIN EN ISO 11885 (2009)	PASS
Cadmium-Total	Microwave digestion	DIN EN ISO 11885 (2009)	PASS
Chromium-Extraction	DIN EN ISO 105-E04 (2013) in acid solution (1 hour extraction with 37°C)	DIN EN ISO 11885 (2009)	PASS
Lead-Extraction	DIN EN ISO 105-E04 (2013) in acid solution (1 hour extraction with 37°C)	DIN EN ISO 11885 (2009)	PASS
Lead-Total	Non-metal parts: Microwave digestion with H ₂ O ₂ /HNO ₃ (or HF in case of silicone polymers) ;Metal parts: Aqua regia	DIN EN ISO 11885 (2009)	PASS
Mercury-Extraction	DIN EN ISO 105-E04 (2013) in acid solution (1 hour extraction with 37°C)	DIN EN ISO 12846(2012)	PASS
Formaldehyde	DIN EN ISO 14184-1, (2011)		PASS
ΣPentachlorophenol (PCP), Tetrachlorophenol (TeCP) and Trichlorophenol (TriCP)	Extraction with KOH	GCMS	PASS
o-Phenylphenol (o-PP)	Extraction with KOH	GCMS	PASS
Dibutyltin (DBT)	ISO/TS 16179 (2012)		PASS
Diocetyl tin (DOT)	ISO/TS 16179 (2012)		PASS
Tributyltin (TBT)	ISO/TS 16179 (2012)		PASS
Triphenyltin (TPhT)	ISO/TS 16179 (2012)		PASS
Monobutyl Tin (MBT)	ISO/TS 16179 (2012)		PASS
Monooctyltin (MOT)	ISO/TS 16179 (2012)		PASS
Triocetyl tin (TOT)	ISO/TS 16179 (2012)		PASS
Σ of NP, OP, NPEO, OPEO	NP,OP: Extraction with THF; NPEO, OPEO: DIN EN ISO 18254-1:2016-09	NP,OP: GCMS or LCMS NPEO, OPEO: DIN EN ISO 18254-1:2016-09	PASS
Azo-Amines	prEN ISO 14362-1 :2015 & prEN ISO 14362-3 :2015		N/A
Σ Phthalates	Extraction with THF with ASE or Soxhlet	GCMS	PASS

Test Report

Report No. SCL01I118709

Page 3 of 14

Report Issued Date : Jan. 5, 2017

Regulated Polycyclic Aromatic Hydrocarbons (PAHs) of high concern	AfPS GS 2014:01	AfPS GS 2014:01	N/A
Σ of Polycyclic Aromatic Hydrocarbons (PAHs)	AfPS GS 2014:01	AfPS GS 2014:01	N/A
Disperse Dyes and Dyestuffs	DIN 54231 (2005)		N/A
Benzene	Solvent Extraction, Analysis by Headspace GCMS/ GCMS/ HPLC		PASS
Phenol	DIN EN 71-10(2006)		PASS
Tetrachloroethane	Solvent Extraction, Analysis by Headspace GCMS/ GCMS/ HPLC		PASS
Toluene	Solvent Extraction, Analysis by Headspace GCMS/ GCMS/ HPLC		PASS
Xylene	Solvent Extraction, Analysis by Headspace GCMS/ GCMS/ HPLC		PASS
Trichloroethylene	Solvent Extraction, Analysis by Headspace GCMS/ GCMS/ HPLC		PASS
Tetrachloroethylene	Solvent Extraction, Analysis by Headspace GCMS/ GCMS/ HPLC		PASS
Dichloromethane	Solvent Extraction, Analysis by Headspace GCMS/ GCMS/ HPLC		PASS
Methylphenol	Solvent Extraction, Analysis by Headspace GCMS/ GCMS/ HPLC		PASS
Dimethylformamide (DMFA)	Solvent Extraction, Analysis by Headspace GCMS/ GCMS/ HPLC		PASS
Trichloromethane (Chloroform)	Solvent Extraction, Analysis by Headspace GCMS/ GCMS/ HPLC		PASS
Cyclohexane	Solvent Extraction, Analysis by Headspace GCMS/ GCMS/ HPLC		PASS
THF	Solvent Extraction, Analysis by Headspace GCMS/ GCMS/ HPLC		PASS
Σ Short Chained Chloroparaffines C10 to C13 (SCCP)	DIN EN ISO 18219(2016-02)		PASS

Note: Photo of submitted sample appendix was included.

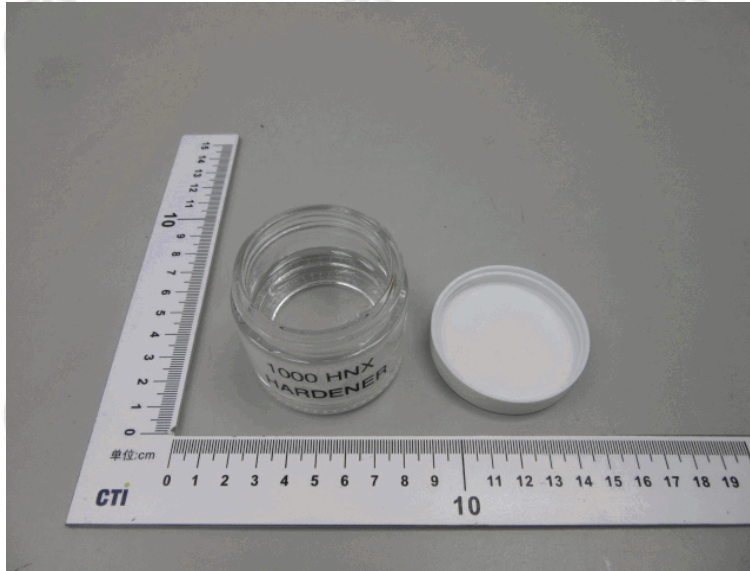
Test Report

Report No. SCL01I118709

Page 4 of 14

Report Issued Date : Jan. 5, 2017

Photo(s) of the sample(s)



***** For Further Details, Please Refer To the Following Page(s) *****

Test Report

Report No. SCL01H118709

Page 5 of 14

Report Issued Date : Jan. 5, 2017

Test Conducted (As Requested By The Client)

1 Cadmium-Extraction

Test Item(s)	Test Result (mg/kg)	MDL (mg/kg)	Threshold Limit Value (TLV) (mg/kg)
	001*		
Cadmium-Extraction	N.D.	0.02	0.1

2 Cadmium-Total

Test Item(s)	Test Result (mg/kg)	MDL (mg/kg)	Threshold Limit Value (TLV) (mg/kg)
	001*		
Cadmium-Total	N.D.	5	40

3 Chromium-Extraction

Tested Item(s)	Test Result (mg/kg)	MDL (mg/kg)	Threshold Limit Value (TLV) (mg/kg)
	001*		
Chromium-Extraction	N.D.	0.02	Adults:2 Infants:1

4 Lead-Extraction

Tested Item(s)	Test Result (mg/kg)	MDL (mg/kg)	Threshold Limit Value (TLV) (mg/kg)
	001*		
Lead-Extraction	N.D.	0.02	Adults:1 Infants:0.2

5 Lead-Total

Test Item(s)	Test Result (mg/kg)	MDL (mg/kg)	Threshold Limit Value (TLV) (mg/kg)
	001*		
Lead-Total	N.D.	5	40

6 Mercury-Extraction

Test Item(s)	Test Result (mg/kg)	MDL (mg/kg)	Threshold Limit Value (TLV) (mg/kg)
	001*		
Mercury-Extraction	N.D.	0.01	0.02

7 Formaldehyde

Test Item(s)	Test Result (mg/kg)	MDL (mg/kg)	Threshold Limit Value (TLV) (mg/kg)
	001		
Formaldehyde	N.D.	13	13

Test Report

Report No. SCL01H118709

Page 6 of 14

Report Issued Date : Jan. 5, 2017

8 ΣPentachlorophenol (PCP), Tetrachlorophenol (TeCP) and Trichlorophenol (TriCP)

Test Item(s)	Test Result (mg/kg)	MDL (mg/kg)	Threshold Limit Value (TLV) (mg/kg)
	001		
Pentachlorophenol (PCP)	N.D.	0.05	Adults: 0.5 Infants: 0.05
2.3.5.6-Tetrachlorophenol	N.D.	0.05	
2.3.4.6-Tetrachlorophenol	N.D.	0.05	
2.3.4.5-Tetrachlorophenol	N.D.	0.05	
2.4.6-Trichlorophenol	N.D.	0.05	
2.3.6-Trichlorophenol	N.D.	0.05	
2.3.5-Trichlorophenol	N.D.	0.05	
2.4.5-Trichlorophenol	N.D.	0.05	
2.3.4-Trichlorophenol	N.D.	0.05	
3.4.5-Trichlorophenol	N.D.	0.05	

9 o-Phenylphenol (o-PP)

Tested Item(s)	Test Result (mg/kg)	MDL (mg/kg)	Threshold Limit Value (TLV) (mg/kg)
	001		
o-Phenylphenol (o-PP)	N.D.	0.5	Adults:1000 Infants: 500

10 Dibutyltin (DBT)

Test Item(s)	Test Result (mg/kg)	MDL (mg/kg)	Threshold Limit Value (TLV) (mg/kg)
	001		
Dibutyltin(DBT)	N.D.	0.05	1

11 Diocetyltn (DOT)

Test Item(s)	Test Result (mg/kg)	MDL (mg/kg)	Threshold Limit Value (TLV) (mg/kg)
	001		
Diocetyltn (DOT)	N.D.	0.05	1

12 Tributyltin (TBT)

Test Item(s)	Test Result (mg/kg)	MDL (mg/kg)	Threshold Limit Value (TLV) (mg/kg)
	001		
Tributyltin(TBT)	N.D.	0.025	0.05

Test Report

Report No. SCL01H118709

Page 7 of 14

Report Issued Date : Jan. 5, 2017

13 Triphenyltin (TPhT)

Tested Item(s)	Test Result (mg/kg)	MDL (mg/kg)	Threshold Limit Value (TLV) (mg/kg)
	001		
Triphenyltin (TPhT)	N.D.	0.05	Adults: 1 Infants: 0.5

14 Monobutyl Tin (MBT)

Test Item(s)	Test Result (mg/kg)	MDL (mg/kg)	Threshold Limit Value (TLV) (mg/kg)
	001		
Monobutyltin(MBT)	N.D.	0.05	1

15 Monooctyltin (MOT)

Test Item(s)	Test Result (mg/kg)	MDL (mg/kg)	Threshold Limit Value (TLV) (mg/kg)
	001		
Monoctyltin(MOT)	N.D.	0.05	1

16 Trioctyltin (TOT)

Test Item(s)	Test Result (mg/kg)	MDL (mg/kg)	Threshold Limit Value (TLV) (mg/kg)
	001		
Trioctyltin(TOT)	N.D.	0.05	1

17 Σ of NP, OP, NPEO, OPEO

Test Item(s)	Test Result (mg/kg)	MDL (mg/kg)	Threshold Limit Value (TLV) (mg/kg)
	001		
Octylphenol(OP)	N.D.	10	250 (10 for NP,OP as single parameters)
Nonylphenol(NP)	N.D.	10	
Octylphenol Ethoxylate(OPEO)	N.D.	50	
Nonylphenol Ethoxylate(NPEO)	N.D.	50	

Test Report

Report No. SCL01H118709

Page 8 of 14

Report Issued Date : Jan. 5, 2017

18 Azo-Amines

Test Item(s)	Cas No.	Test Result (mg/kg)	MDL (mg/kg)
		001	
2,4,5-trimethylaniline	137-17-7	N/A	5
2,4-diaminoanisole	615-05-4	N/A	5
2,4-diaminotoluene	95-80-7	N/A	5
2,4-xylydine	95-68-1	N/A	5
2,6-xylydine	87-62-7	N/A	5
2-methoxyaniline	90-04-0	N/A	5
2-naphthylamine	91-59-8	N/A	5
3,3'-dichlorobenzidine	91-94-1	N/A	5
3,3'-dimethoxybenzidine	119-90-4	N/A	5
3,3'-dimethylbenzidine	119-93-7	N/A	5
4,4'-diaminodiphenylmethane	101-77-9	N/A	5
4,4'-methylene-bis-(2-chloro-aniline)	101-14-4	N/A	5
4,4'-methylenedi-o-toluidine	838-88-0	N/A	5
4,4'-oxydianiline	101-80-4	N/A	5
4,4'-thiodianiline	139-65-1	N/A	5
4-aminoazobenzene	60-09-3	N/A	5
4-aminobiphenyl	92-67-1	N/A	5
4-chloro-o-toluidine	95-69-2	N/A	5
4-chloroaniline	106-47-8	N/A	5
5-nitro-o-toluidine	99-55-8	N/A	5
6-methoxy-m-toluidine	120-71-8	N/A	5
Benzidine	92-87-5	N/A	5
o-aminoazotoluene	97-56-3	N/A	5
o-toluidine	95-53-4	N/A	5

Threshold Limit Value(TLV) = 20 mg/kg

Test Report

Report No. SCL01I118709

Page 9 of 14

Report Issued Date : Jan. 5, 2017

19 Σ Phthalates

Test Item(s)	Test Result (mg/kg)	MDL (mg/kg)	Threshold Limit Value (TLV) (mg/kg)
	001*		
Dibutylphthalate (DBP)	N.D.	50	500
Butylbenzylphthalate (BBP)	N.D.	50	
Di(2-ethylhexyl)-phthalate (DEHP)	N.D.	50	
Di-n-octylphthalate (DNOP)	N.D.	50	
Di-Iso-nonylphthalate (DINP)	N.D.	50	
Diisodecylphthalate (DIDP)	N.D.	50	
Diisobutylphthalate (DIBP)	N.D.	50	
Di-C6-8-branched alkylphthalates(DIHP)	N.D.	100	
Di-C711-branched alkylphthalates(DHNUP)	N.D.	100	
Di-n-hexylphthalate(DHP)	N.D.	50	
Di-(2-methoxymethyl)-phthalate(DMEP)	N.D.	50	
Di-n-Pentyl Phthalate (DPP)	N.D.	50	
Dicyclohexyl phthalate(DCHP)	N.D.	50	

20 Regulated Polycyclic Aromatic Hydrocarbons (PAHs) of high concern

Test Item(s)	Test Result (mg/kg)	MDL (mg/kg)	Threshold Limit Value (TLV) (mg/kg)
	001		
Benzo(a)anthracene	N/A	0.2	1
Chrysene	N/A	0.2	1
Benzo(b)fluoranthene	N/A	0.2	1
Benzo(k)fluoranthene	N/A	0.2	1
Benzo(a)pyrene	N/A	0.2	1
Dibenzo(a,h)anthracene	N/A	0.2	1
Benzo (j) fluoranthene	N/A	0.2	1
Benzo (e) pyrene	N/A	0.2	1

Test Report

Report No. SCL01H118709

Page 10 of 14

Report Issued Date : Jan. 5, 2017

21 Σ of Polycyclic Aromatic Hydrocarbons (PAHs)

Test Item(s)	Test Result (mg/kg)	MDL (mg/kg)	Threshold Limit Value (TLV) (mg/kg)
	001		
Naphthalene	N/A	0.2	10
Acenaphthylene	N/A	0.2	
Acenaphthene	N/A	0.2	
Fluorene	N/A	0.2	
Phenanthrene	N/A	0.2	
Anthracene	N/A	0.2	
Fluoranthene	N/A	0.2	
Pyrene	N/A	0.2	
Benzo[a]anthracene	N/A	0.2	
Chrysene	N/A	0.2	
Benzo[b]fluoranthene	N/A	0.2	
Benzo[k]fluoranthene	N/A	0.2	
Benzo[a]pyrene	N/A	0.2	
Indeno[1,2,3-cd]pyrene	N/A	0.2	
Dibenzo[a,h]anthracene	N/A	0.2	
Benzo[g,h,i]perylene	N/A	0.2	
Benzo[j]fluoranthene	N/A	0.2	
Benzo[e]pyrene	N/A	0.2	

Test Report

Report No. SCL01H118709

Page 11 of 14

Report Issued Date : Jan. 5, 2017

22 Disperse Dyes and Dvestuffs

Test Item(s)	Cas No.	C.I. No.	Test Result (mg/kg)	MDL (mg/kg)
			001	
Acid Red 26	3761-53-3	16150	N/A	15
Basic Black 38	1937-37-7	30235	N/A	15
Basic Red 9	569-61-9	42500	N/A	15
Basic Violet 14	632-99-5	42510	N/A	15
Direct Blue 6	2602-46-2	22610	N/A	15
Direct Red 28	573-58-0	22120	N/A	15
Disperse Blue 1	2475-45-8	64500	N/A	15
Disperse Blue 102	12222-97-8	/	N/A	15
Disperse Blue 106	12223-01-7	/	N/A	15
Disperse Blue 124	61951-51-7	/	N/A	15
Disperse Blue 26	3860-63-7	63305	N/A	15
Disperse Blue 3	2475-46-9	61505	N/A	15
Disperse Blue 35	12222-75-2	/	N/A	15
Disperse Blue 7	3179-90-6	62500	N/A	15
Disperse Brown 1	23355-64-8	/	N/A	15
Disperse Orange 1	2581-69-3	11080	N/A	15
Disperse Orange 11	82-28-0	60700	N/A	15
Disperse Orange 149	85136-74-9	/	N/A	15
Disperse Orange 3	730-40-5	11005	N/A	15
Disperse Orange 37/59/76	12223-33-5/13 301-61-6/5181 1-42-8	/	N/A	15
Disperse Red 1	2872-52-8	11110	N/A	15
Disperse Red 11	2872-48-2	62015	N/A	15
Disperse Red 17	3179-89-3	11210	N/A	15
Disperse Yellow 1	119-15-3	10345	N/A	15
Disperse Yellow 23	6250-23-3	26070	N/A	15
Disperse Yellow 3	2832-40-8	11855	N/A	15
Disperse Yellow 39	12236-29-2	/	N/A	15
Disperse Yellow 49	54824-37-2	/	N/A	15
Disperse Yellow 9	6373-73-5	10375	N/A	15

Threshold Limit Value(TLV) = 50 mg/kg

Test Report

Report No. SCL01H118709

Page 12 of 14

Report Issued Date : Jan. 5, 2017

23 Benzene

Test Item(s)	Test Result (mg/kg)	MDL (mg/kg)	Threshold Limit Value (TLV) (mg/kg)
	001		
Benzene	N.D.	1	5

24 Phenol

Test Item(s)	Test Result (mg/kg)	MDL (mg/kg)	Threshold Limit Value (TLV) (mg/kg)
	001		
Phenol	N.D.	5	15

25 Tetrachloroethane

Test Item(s)	Test Result (%)	MDL (%)	Threshold Limit Value (TLV) (%)
	001		
Tetrachloroethane	N.D.	0.001	0.1

26 Toluene

Test Item(s)	Test Result (%)	MDL (%)	Threshold Limit Value (TLV) (%)
	001		
Toluene	N.D.	0.001	0.1

27 Xylene

Test Item(s)	Test Result (%)	MDL (%)	Threshold Limit Value (TLV) (%)
	001		
Xylene	N.D.	0.001	0.1

28 Trichloroethylene

Test Item(s)	Test Result (%)	MDL (%)	Threshold Limit Value (TLV) (%)
	001		
Trichloroethylene	N.D.	0.001	0.1

29 Tetrachloroethylene

Test Item(s)	Test Result (%)	MDL (%)	Threshold Limit Value (TLV) (%)
	001		
Tetrachloroethylene	N.D.	0.001	0.1

Test Report

Report No. SCL01H118709

Page 13 of 14

Report Issued Date : Jan. 5, 2017

30 Dichloromethane

Test Item(s)	Test Result (%)	MDL (%)	Threshold Limit Value (TLV) (%)
	001		
Dichloromethane	N.D.	0.001	0.1

31 Methylphenol

Test Item(s)	Test Result (%)	MDL (%)	Threshold Limit Value (TLV) (%)
	001		
Methylphenol	N.D.	0.001	0.1

32 Dimethylformamide (DMFA)

Test Item(s)	Test Result (%)	MDL (%)	Threshold Limit Value (TLV) (%)
	001		
Dimethylformamide (DMFA)	N.D.	0.001	0.1

33 Trichloromethane (Chloroform)

Test Item(s)	Test Result (%)	MDL (%)	Threshold Limit Value (TLV) (%)
	001		
Trichloromethane (Chloroform)	N.D.	0.001	0.1

34 Cyclohexane

Test Item(s)	Test Result (%)	MDL (%)	Threshold Limit Value (TLV) (%)
	001		
Cyclohexane	N.D.	0.001	0.1

35 THF

Test Item(s)	Test Result (%)	MDL (%)	Threshold Limit Value (TLV) (%)
	001		
THF	N.D.	0.001	0.1

36 Σ Short Chained Chloroparaffines C10 to C13 (SCCP)

Test Item(s)	Test Result (mg/kg)	MDL (mg/kg)	Threshold Limit Value (TLV) (mg/kg)
	001		
Σ Short Chained Chloroparaffines C10 to C13 (SCCP)	N.D.	100	1000

Test Report

Report No. SCL01H118709

Page 14 of 14

Report Issued Date : Jan. 5, 2017

Remark: -MDL = Method Detection Limit

-N.D. = Not Detected (<MDL)

-mg/kg = ppm = parts per million

-N/A = Not Applicable

-*= As specified by the client, the test result(s) was/ were based on the dry weight of the submitted sample(s).The result is to be calculated on a dry weight basis.

Tested Sample/Part Description

001 Transparent ink(1000HNX Hardener)

*** End of Report ***

The test report is effective only with both signature and specialized stamp, The result(s) shown in this report refer only to the sample(s) tested. Without written approval of CTI, this report can't be reproduced except in full.